

NORTH LANARKSHIRE'S *Exhibition* PROGRAMME 2020



We have an exciting programme of temporary exhibitions on offer throughout the year in venues across North Lanarkshire. View the talented work of local artists and photographers and be inspired by the work of Glasgow Art School graduates, Polly Pentreath and Charlie Yates. Find out about the invaluable work done by charities in the local community such as the Moira Anderson Foundation and Hope for Autism. You can also explore record cover art, take a trip back in time to the 1980s and get your popcorn ready to celebrate the golden age of cinema in Scotland.

Schools Outreach Programme for Art Exhibitions	3
Airdrie Community Health Centre	4
Bellshill Cultural Centre	7
Motherwell Concert Hall and Theatre	10
North Lanarkshire Heritage Centre	13
Summerlee Museum of Scottish Industrial Life	18
Venue Directory	22

Schools Outreach Programme for Art Exhibitions

Culture NL run select workshops that give student groups the chance to create alongside a professional artist. These kinds of sessions can offer the student a great insight into the artist's work and a range of activities that stimulate and inspire. If you are interested in taking part in workshops related to the forthcoming art exhibition programme please call **01236 632828** or email **info@culturenl.co.uk**

Venue Directory

Airdrie Community Health Centre

88 Graham Street, Airdrie, ML6 6DB

Bellshill Cultural Centre

John Street, Bellshill, ML4 1RJ

01698 346770

Motherwell Concert Hall and Theatre

Windmillhill Street, Motherwell, ML1 1AB

01698 274545

North Lanarkshire Heritage Centre

High Road, Motherwell, ML1 3HU

01698 274590

Summerlee Museum of Scottish Industrial Life

Heritage Way, Coatbridge, ML5 1QD

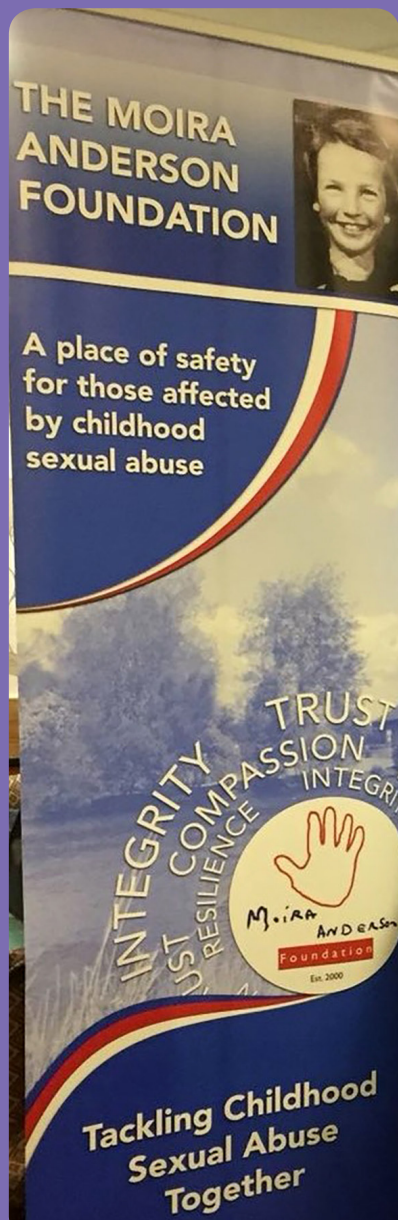
01236 638460

Airdrie Community Health Centre

27 January – 16 March

Moira Anderson Foundation

This exhibition gives an insight into the work of the Moira Anderson Foundation. The charity supports adults and children affected by childhood sexual abuse. They support people through trauma and help them live their lives to the full by offering a range of services including counselling, group work and complimentary therapies.



30 March – 1 June Hope for Autism

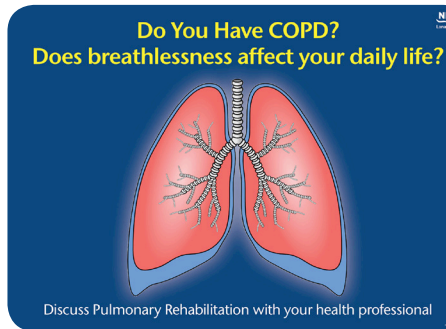
HOPE for Autism is a registered charity that has been offering pre and post-diagnostic support to families of autistic children and young people since 2002. Families can access emotional and practical support and advice at any point during their parenting journey as well as access a range of autism-related training and information sessions, parent support groups and support from staff at important decision-making meetings. They use a whole family support approach which helps them to reach siblings and other important family members such as grandparents who are also encouraged to attend training sessions.



The art work on display gives a fascinating insight into the work of the charity and how families are affected by autism

15 June – 7 September COPD Exhibition

This exhibition explores the work of the Airdrie Local Area Partnership teams in investigating the prevalence of COPD (chronic obstructive pulmonary disease). COPD is an umbrella term for a number of conditions which cause long-term damage to the lungs. Their work involves early prevention and intervention to ensure people get the right support and help slow down the effects of COPD to keep people living with the condition healthier for longer.



5 October – 14 December

Airdrie Consortium

The work featured explores the work of the Airdrie Consortium; a group of people from The Voluntary Sector, NHS Lanarkshire, North Lanarkshire Council and The Local Community. Primarily, they work together to encourage and support local people to become involved in their local community in a meaningful way at a grass roots level and beyond. They also help to encourage and support groups of people of all ages, to get together to share information, relax and enjoy the company of others in the same situation. Groups are enabled to talk openly about issues or else just get together to have some fun, learn something new or keep active and improve their lives.



Bellshill Cultural Centre

22 January – 22 April **Bellshill Photographers**

A display of photographic work by class members from Culture NL's Bellshill photography class. Class member David Anderson says, *"We're amateur photographers who like the challenge of taking an image and using the available software to enhance or modify the image in some way to create a pleasing picture. It also gets us out and about at all times in the year, meeting people and seeing different parts of the country"*. Each member of the group will submit a selection of chosen work resulting in an eclectic mix of approaches, aesthetic and formal decision making.



6 May – 17 June
Polly Pentreath



A graduate from the Glasgow School of Art 2019, Painting and Printmaking Department, Polly's practice is centred on a meeting between the real and the imaginary through dream narratives and cinematic aesthetics. She collects imagery from books, film and mythology, among other sources, to suggest ambiguous narratives reminiscent of film stills. Much of this is

concerned with the transience of postmodern architecture: the offices and hotel chains that are as anonymous as they are universally familiar. Surrealist film and literature informs much of Polly's practice. Through painting she aims to expand space(s) into dreamscapes and show a reality warped by the imaginary.

24 June – 12 August
Pather Artworks Ceramics



An exciting array of new work by members who attend ceramic classes at Pather Artworks in Wishaw. Displayed work will be presented in the form of clay panel reliefs and photographic documentation.

26 August – 28 October

Kenny Eve

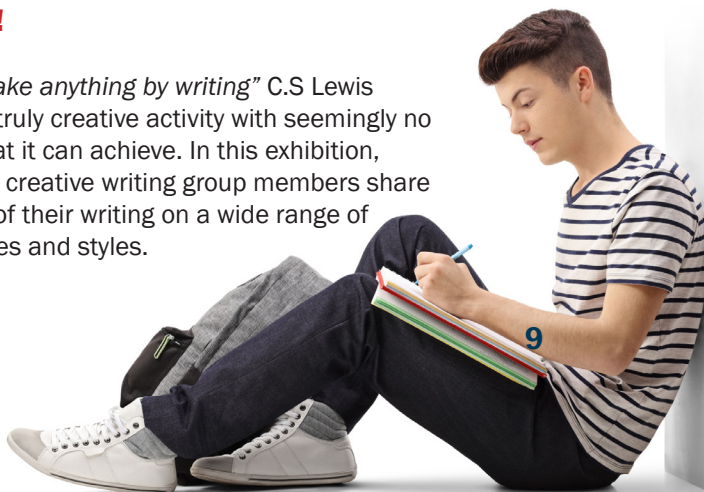
Based in Bellshill, North Lanarkshire, Kenny draws inspiration from local history and from a passion for hillwalking and mountain climbing. He enjoys using mixed media paints, watercolour and acrylic preferring to paint on a large canvas surface. Kenny says of his work, *“I have been painting for the last 5 years, gradually improving my skills. Painting is a genuine escape from a busy life and is an excellent way to relax and to look after my own mental health”* Culture NL looks forward to hosting and supporting this local artist’s work.



11 November – 23 December

Write On!

“You can make anything by writing” C.S Lewis
Writing is a truly creative activity with seemingly no limits to what it can achieve. In this exhibition, Culture NL’s creative writing group members share a selection of their writing on a wide range of topics, genres and styles.



Motherwell Concert Hall and Theatre

20 January – 20 April

Charlie Yates

A recent graduate of Glasgow School of Art, Charlie Yates is a Scottish artist based in Glasgow and Edinburgh. His work is made up of observations and partially recalled places, objects and memories in the form of sketches, photographs and verbal recordings. As he attempts to re-contextualize these experiences, the fragmented nature of memory is suggested within his paintings.

Through his research, he discovered Lambay a private island off of the East coast of Dublin. On a trip to the island he came across an abandoned 'Real' tennis court and the desolate nature of this space heightened his own sense of isolation. A burgeoning interest in this unusual place stimulated an extended body of work, some of which we are fortunate to have on display in North Lanarkshire.



11 May – 27 July

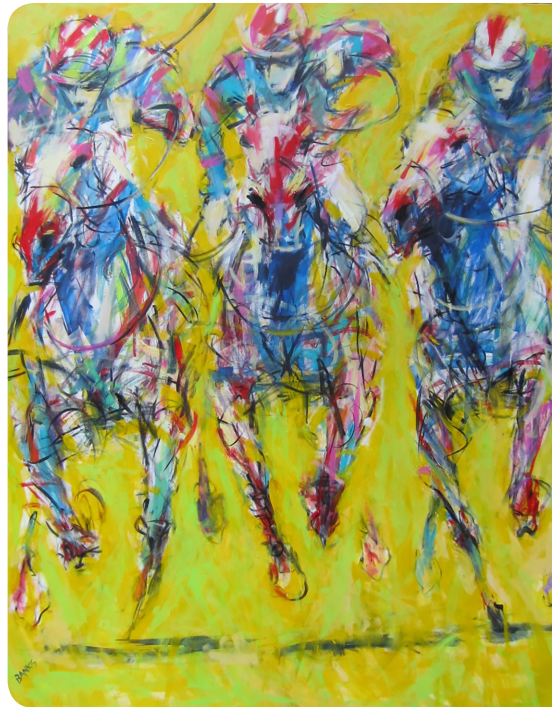
Culture NL Photography Class Work

We are pleased to host a new photographic display produced by members who attend Culture NL photography classes. The work showcases a broad range of subjects and genre's from portrait photography, reportage, still life, landscape and more. Showcasing a wealth of talent from North Lanarkshire.

17 August – 26 October

Alasdair Banks

Alasdair is an artist based in Glasgow best known for expressionistic interpretations of horse racing. He strives to capture the energy, movement and drama in his work and has developed a distinctive style that is unique in the genre of contemporary equine art. He has applied this style to cityscapes, motor racing, boxing and other sports. Having shown his work with Culture NL some years ago, Culture NL is delighted to support a showing of Alasdair's more recent work.



9 November – 21 December

Sean Patrick Campbell

A graduate from the Photography Department, Glasgow School of Art 2019, Sean Patrick is an artist/photographer based in Glasgow. Through his lens based practice he investigates the relationship between landscape and mythology in a personal, cultural and political context. In an age of human dominance over nature, cultural traditions are often exposed as flawed, inaccurate and incomplete. Through his work, Sean Patrick asks, “How do we write the collective story of our times while desperately writing our own personal narrative?” His work seeks to reflect this difficulty in creating imagery of a time and/or place that feels unreal, uncanny and unsettling. Underlying his work however, is a resistance and a hope for positive change.



North Lanarkshire Heritage Centre

15 February – 9 May

8+ yrs £7 (includes all materials and equipment)

An exciting touring exhibition exploring record cover art is brought to you by Edinburgh Printmakers. The exhibition celebrates the vinyl record as an abiding audio-visual artefact, recalling the golden age of the record cover in the thick of post-psychedelia's goth-surrealistic art-nouveau apocalyptic landscape explosion, now being revived in a resurgence of collectable limited edition records with original artwork.

It includes original prints by Scottish artists and a new LP of music by People Like Us, aka international award winning multimedia artist Vicki Bennett.

Kindly supported by Scottish Arts Council.

Thursday 9 April 10am – 12pm
Conference Room,
Limited Edition! Mono Printing Class



Taking inspiration from the many iconic LP's from the 1960's–1990's, design and create your very own record sleeve, with a focus on line, motif and colour. Mono printing is a fast and energetic way of making a unique design using acrylic plastic sheets and coloured ink. Make a statement for the 21st Century with wow factor results! To book a place please call **01236 632828**.

Look out for more adult and children's printmaking workshops. Visit **culturenl.co.uk** for more information. A hands on primary school workshop called "Making Your Mark" is available in conjunction with this exhibition. Please call **01698 638460** for more information or to book.



Edinburgh
Printmakers

EP

22 May – 22 August I Grew Up 80s



Following the success of his hit Star Wars-themed exhibition May The Toys Be With You, collector and cultural commentator Matt Fox has devoted himself to exploring a 1980s childhood through the iconic objects of this colourful era during which so much changed.

You will be able to travel through the cultural landscape of childhood in 1980s Britain, revisiting the vibrancy, quirkiness and innovation that symbolised the period. From Betamax to BMX, the Rubik's Cube to the ZX Spectrum, the Thompson Twins to Transformers.



So, like Bill and Ted in their phone booth or Marty McFly in his DeLorean, let us take a most excellent adventure back in time to revisit ten remarkable years. The greatest decade in the history of history – the 1980s!

Join us over the summer holidays for a fun filled programme of family activities including discos, workshops, films, and more. Visit cultureenl.co.uk for more information.



5 September – 7 November

WW100 Scotland Art Installation

What Do We Learn From All This?



A unique installation telling Scotland's WW1 story from the perspective of 100 young artists from across the country comes to North Lanarkshire.

Combining traditional printmaking with innovative technologies, the exhibition tells 100 stories gathered from all corners of Scotland. Each unique artwork is arranged in a map of Scotland, with augmented reality technology allowing you to explore each story in detail.

From individual acts of valour on the battlefield to naval tragedies off Scotland's coast, from the thousands of workers filling factories at home to the brave members of the Scottish Women's Hospitals at the Western Front, from innovations in areas such as surgery and aviation to the enduring work of poets and artists in the trenches, the exhibition takes in a wide range of stories and subjects that will resonate with everyone.

Creative art workshops available at weekends and school holidays also.



Join us for "*The Big Draw*" this October when you can get in touch with your creative side. Look out for drawing, painting and printing activities for all ages!

Please visit **culturenl.co.uk** for more information.

Discover the First World War through art and objects in our "*Lanarkshire's Great War*" workshops available for primary and secondary pupils. Call **01236 638 460** to book.

21 November – 24 December

Christmas Tales

Christmas Tales is a magical, sensory exhibition for little ones to explore. There are stories and soft play, colourful lights and seasonal fun to be had. Just bring your imagination!

Christmas themed workshops are available for schools and early years throughout December as well as Children's' Elf workshops every Saturday. See **culturenl.co.uk** for more information.



Summerlee Museum of Scottish Industrial Life

18 January – 23 February

Buoys & Grilles 2019

**16th Annual Creative Residency
Exhibition**

The exhibition is a showcase of work highlighting the talents of North Lanarkshire pupils who attended this year's annual Creative Residency.

Participants spend a week in June at Kilbowie Outdoor Centre in Oban where they are mentored by some of Scotland's top art practitioners. Disciplines include Drawing and Painting, Music, Printmaking, 3-D Design, Digital Photography, Creative Writing and Drama. The work produced at the Residency can be seen in this exhibition.

Drop-in arts and crafts every weekend from 12pm-3pm.

Primary school workshops available for First and Second level including Portraits in Art & Colour and Shape. Call **01236 638460** to book.



24 March – 14 June

Landscapes of Water

An exhibition of work by artist, Lesley Banks which beautifully captures the magnificent coastal and inland waterways of Scotland.

In contrast to the calm surface water of canals these vast coastal vistas offered Lesley a very different challenge. Dramatic rocky jagged outcrops stretch out to the sea at Castle Lachlan in Argyll. The rhythmic sound of the waves a constant background hum to the seagull screams.

Family activities during school holidays.
STEM workshops for schools including 'How the Vulcan Floats', 'Wildlife in the Park and 'Heavy Metal – Iron Burgh Innovations'.

Saturday 6 June 10am - 4pm
Reigart Suite, Summerlee Museum,
Coatbridge

16yrs+ £35/£32 concession

(includes all materials)

Landscapes and Water...Made Easy

Join us for a masterclass with exhibiting artist Lesley Banks. Use the Monkland Canal which flows into Summerlee as your inspiration. Weather permitting the class will involve some plein air sketching along the canal. Call **01236 632828** to book.

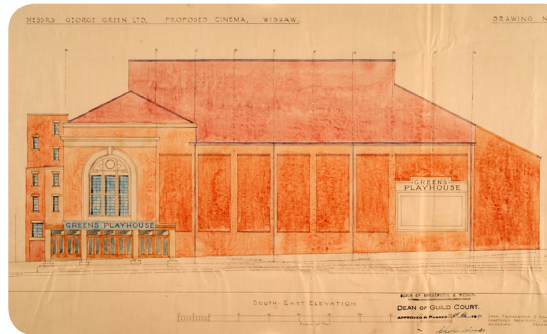


4 July – 18 October
**Glitz and Glamour:
The Golden Age of
Cinema in Scotland**

From stars of the silver screen to uniformed doormen and usherettes selling ice-cream, going to the pictures infused a taste of Hollywood into Scottish lives during the twentieth century.



This colourful exhibition showcases artefacts from Scotland's largest cinema collection, from picture house furnishings and vintage vending trays to ushers' uniforms, film posters and movie magazines. Vibrant visuals, archival film footage and audio clips from former picture-goers make this a treat for the senses, so take a trip down memory lane and immerse yourself in the glamour of cinema's golden age!



Includes children's activities and free daily matinee screenings at 2pm. Cinema Memories loan box available, plus extra activities at weekends and during school holidays – see **culturenl.co.uk/summerlee** or call **01236 638352** for details.



supported by



culturenl.co.uk