

ARTS AND YOU

north lanarkshire's
community arts programme

JANUARY - JULY 2020



**DISCOVER
YOUR
TALENT**

ADULTS AND CHILDREN'S ACTIVITIES

Visual Arts

Ceramics

Creative Writing

Drama

Singing

Crafts

Dance

Photography

Drums

Guitar

Keyboard

Little Groovers



Culturenl.co.uk/arts



CultureNLArts



Arts_NL



01236 632828





JANUARY - JULY 2020

ARTS AND YOU

art classes, workshops, events and
exhibitions in North Lanarkshire



CONTENTS

Introducing Arts and You	4
Community Arts Classes, Workshops and Events	6
Visual Arts & Crafts	7
Arts and Crafts Courses for Adults	8
Creative Writing	10
Photomedia Studio	13
Holiday Activities for Young People and Families	15
Dance	18
Drama	20
Music	25
Beetroot Studio	29
Exhibition Programme	30
General Information	33
Arts by Area	34
Venue Directory	40



**WHAT
COULD
YOU
DO?**

"I wasn't
sure what
to expect...
the teacher
was really
friendly
and put me
at ease. I
loved it; I
ill be back
next year...
Monica



welcome to...

ARTS AND YOU



Welcome to our community arts programme, Arts and You, for the first half of 2020. We hope you will find something in it to inspire you to join us; it's about creativity, it's about getting involved, it's about arts and you!

We have lots of arts activities on offer - ever thought about trying to learn how to play guitar, how to take great photographs, creative writing or learn to make ceramics? Come along and try something new! Discover the new you and discover your talent!

Our classes offer local, value for money access to a wide range of quality arts activities, workshops and events that we already know you enjoy. It's your local arts programme and we want to share what we offer as widely as possible across the North Lanarkshire community. Come and join us!



Introducing our team of Arts Development Officers...

Ann Louise Kieran

Arts Development Officer (Visual Arts)

t: 01236 856228 / e: KieranA@culturenl.co.uk

 @Culturenl Ann Louise



Laura McIver

Arts Development Officer (Performing Arts and Dance)

t: 01236 856224 / e: McIverLa@culturenl.co.uk

 @Culturenl Laura



Deborah McArthur

Arts Development Officer (Performing Arts and Music)

t: 01236 856246 / e: mcarthurd@culturenl.co.uk

 @CNL_Deborah  @Culturenl Deborah



Creative Writing

t: 01236 856235 / e: loudonc@culturenl.co.uk

e: artdevelopment@culturenl.co.uk



David Peace

Arts Development Officer (Photomedia)

t: 01236 638463 / e: PeaceD@culturenl.co.uk

 Photomedia Studio  @Culturenl David



Heather Thom

Pather Artworks Officer

t: 01698 351559 / e: ThomH@culturenl.co.uk

 @CultureNL Heather



Stuart Macleod

Beetroot Studio

e: stuartmac148@gmail.com



For general enquiries about Community Arts classes and activities, telephone 01236 632828.

COMMUNITY ARTS CLASSES, WORKSHOPS AND EVENTS

From **Monday 13 January 2020**, CultureNL's Community Arts Team is offering a new programme of affordable, weekly arts classes that will appeal to children, young people and adults of all abilities.

Weekly classes are OFF on the following dates:

- School In-service – 10,11, 12 and 13 February – Children's classes
- Easter holidays – Monday 6 April to Saturday 18 April (inc) ALL classes
- Public Holiday – Friday 8 May – ALL classes
- School In-service – Monday 11 May – Children's classes
- Public Holiday – Friday 22 May – Monday 25 May – ALL classes

Classes start back after the summer break on Monday 24 August 2020.

We will update our arts programme and give you news and information throughout the year on our website, twitter and facebook pages, please check us out.

culturenl.co.uk/arts



**WHAT
COULD
YOU
DO?**



VISUAL ARTS & CRAFTS

A wide range of weekly classes are held in community centres and facilities across North Lanarkshire and offer drawing and painting, printing and arts and crafts. Our ceramics studio, Pather Artworks, is located in a bright art studio within Pather Community Centre, Wishaw, and offers a range of ceramic based classes.

All our classes are skills based, for adults and children of all abilities, and are run in relaxed and informal settings. For further information on visual arts classes call **01236 856228** or for Pather Artworks enquiries call **01698 351559**.

Ann Louise Kieran, Visual Arts Development Officer

"Welcome to the Visual Arts Programme for January-July 2020. It's a great time to make New Year resolutions a reality.... Get out to learn a new skill, enjoy new creative experiences and meet new people."

Culture NL is hosting a series of 'Made Easy' masterclasses to get you back into the swing of things with visiting artist's Greg Moore, Charlie Yates and Lesley Banks. Our exhibition programme also features a wide range of talent from recent graduates, local artists and professional artists from further afield. For inspiration be sure to look out for Polly Pentreath, Kenny Eve and Alasdair Banks to name a few".

Get motivated, get involved, get along!



KIDS VISUAL ARTS & CRAFTS CLASSES

7+yrs £6 (all materials supplied)

A wide range of arts activities is on offer including drawing, painting, clay modelling, sculpture making and printmaking.

Tuesdays	4pm - 5.30pm	Charlotte Toal Centre, Coatbridge
Wednesdays	4pm - 5.30pm	The Link, Cumbernauld
Wednesdays	6.45pm - 8pm	Gartcosh Community Centre
Thursdays	5pm - 6.30pm	Bellshill Cultural Centre
Thursdays	6pm - 7.30pm	Airdrie Town Hall

CRAFTY KIDS CERAMICS CLASSES AT PATHER ARTWORKS

8+yrs £5.50 (all materials supplied)

Fun, skills based weekly classes that offer drawing, painting, sculpture and ceramics. Enjoy some hands on creative fun!

Tuesdays	4pm - 5pm	Pather Artworks, Wishaw
----------	-----------	-------------------------



ADULT CLASSES

Arts and You adult classes are skills based and will cater for a mix of beginners and experienced participants (unless otherwise stated).

For general enquiries about Community Arts classes and activities, call 01236 632828 or email arts@culturenl.co.uk

Heather Thom, Pather Artworks Officer

"Pather Artworks offers pottery classes to suit all abilities. Anything is possible, if you have the idea we are here to help you build it, whether it be press moulding, hand building, sculpture or throwing on the potter's wheel. All welcome."



ADULT DRAWING AND PAINTING CLASSES

16+yrs £7/£6 Concession (all materials supplied)

Suitable for beginners or for more advanced artists.

Mondays	1.30pm - 3.30pm	Bellshill Cultural Centre
Mondays	7pm - 9pm	Charlotte Toal Centre, Coatbridge
Tuesdays	10am - 12pm	Charlotte Toal Centre, Coatbridge
Tuesdays	10am - 12pm	The Link, Cumbernauld
Tuesdays	7pm - 9pm	Charlotte Toal Centre, Coatbridge
Thursdays	1.30pm - 3.30pm	Airdrie Town Hall
Fridays	10am - 12.00pm	Stepps Cultural Centre
Fridays	1.30pm - 3.30pm	Pather Artworks, Wishaw



ADULT STUDIO CERAMICS CLASSES

16+yrs £7.50/£6.50 Concession

An open class for adults of all abilities who wish to work on more complex work.

Thursdays	10am - 12pm	Pather Artworks, Wishaw
-----------	-------------	-------------------------

ADULT CERAMICS CLASSES

16+yrs £7/£6 Concession

Relaxed and informal classes for both beginners and experienced potters alike. Work through projects using different ceramics techniques.

Mondays	1.30pm - 3pm	Pather Artworks, Wishaw
Tuesdays	1.30pm - 3pm	Pather Artworks, Wishaw
Wednesdays	11am - 12.30pm	Pather Artworks, Wishaw
Wednesdays	1.30pm - 3pm	Pather Artworks, Wishaw

CERAMICS EVENING CLASS FOR ADULTS

16+yrs £7.50/£6.50 Concession

An open class for adults that covers beginners to more advanced skills.

Tuesdays	6pm - 8pm	Pather Artworks, Wishaw
Thursdays	6pm - 8pm	Pather Artworks, Wishaw





CREATIVE WRITING

16+yrs £5.50/£5 Concession

Join like-minded wordsmiths to share ideas, work in progress and receive useful tips - whether it's the first time you've put pen to paper, or you've been scribing away for years!

Wednesdays	1pm - 3pm	Bellshill Cultural Centre
Thursdays	5.15pm - 6.45pm	Airdrie Library

For Creative Writing enquiries please call 01236 856235.



ARTS AND CRAFT CLASSES FOR ADULTS

Ann Loiuise Kieran, Visual Arts Development Officer

As well as our regular weekly classes, this session we've come up with a new range of 'Made Easy....' masterclasses to ease you into the New Year or back into a more creative frame of mind. These one day courses are tutored by extremely talented artists to help you with any technical difficulties AND creative blocks you may have. Everyone needs a kick start, a refresher or a helping hand. Within a relaxed and friendly environment make a New Year resolution and come along!"

Why not sign up for one of our short courses or one day workshops, specialist tutoring opportunities or events to improve your skills and knowledge? We offer a great selection of activities that offer great value for money. All materials and equipment are included, all you need to bring along is your imagination.

Don't miss out – these workshops are really popular and places are limited - book a place now!

Call 01236 632828 to book and pay for your place.

DRAWING WITH PERSPECTIVE...MADE EASY**16yrs+ £35.00/£32 concession (includes all materials and equipment)**

Saturday 15 Feb

10am - 4pm

Reigart Suite, Summerlee Museum, Coatbridge

Do you struggle with perfect perspective? Your vertical lines more 'Leaning Tower' than 'The Shard'....? Then this is the masterclass for you! Under the expert guidance of artist Greg Moore, you will learn how the basic rules of linear and tonal perspective help to create distance and reality in your painting. You will then be able to put the do's and don'ts to practice within a finished piece. Refreshments provided.

**DRY-POINT & COPPER ETCHING ...MADE EASY**

**16+ yrs £35/£32
concession (includes all
materials and equipment)**

Saturday 14 March

10am - 4pm

Reigart Suite,
Summerlee
Museum,
Coatbridge

Culture NL is pleased to invite back visiting artist Greg Moore. An excellent hands-on masterclass this class will introduce and guide you through the basics of Dry-point and Copper Plate etching. Non acid etching is an exciting technique that combines elements of drawing, design and craft creating dynamic prints on paper. With a focus on compositions using perspective, participants are welcome to take along a selection of their own source material to refer to when making up their printing plate. Create a dry point etching during the day, print it and take your etching home with you! Refreshments provided.



ARCHITECTURE & ATMOSPHERE IN PAINTING... MADE EASY

16+ yrs £35/£32 concession (includes all materials)

Saturday 16 May 10am - 4pm Bellshill Cultural Centre (MP1)

Culture NL is pleased to host a masterclass with exhibiting artist Charlie Yates. Charlie's work is broadly concerned with memory, cultural heritage, and architecture. This masterclass asks participants to think about the depiction of architectural structures, town and cityscapes in the construction of a painted narrative. How can the artist imbue meaning and atmosphere? How can this be done successfully without the painting becoming merely a technical exercise?

LANDSCAPES AND WATER...MADE EASY

16yrs+ £35/£32 concession (includes all materials)

Saturday 6 June 10am - 4pm Reigart Suite, Summerlee Museum, Coatbridge

A fantastic opportunity to learn painting techniques from exhibition artist Lesley Banks. Lesley's current exhibition at Summerlee Museum is a display of paintings relating to the canals and waterways of Monklands. The masterclass will also focus on this theme. Weather permitting, the masterclass will involve some *plein air* sketching along the small stretch of canal at the museum. The afternoon will then comprise of studio work and a longer painting session under the expert guidance of Lesley.



Photomedia Studio



David Peace
Photomedia Arts Development Officer

"I hope you will make 2020 the year to get involved in photography – choose from our regular weekly classes or a variety of one off or short courses. We have a great programme lined up in traditional and digital photography as well as online, video and film recording. There's also the opportunity to hire out the studio for special projects and events to individuals or groups."

If you have a specific project please get in touch to discuss.

Summerlee Photomedia Studio offers traditional and digital photography, the moving image and digital music making facilities, classes, workshops and events.

For further information call 01236 632828. For specific information on Photomedia classes call 01236 638463 or email peaced@culturenl.co.uk

on



WORKSHOPS AND SPECIAL EVENTS

STUDIO STILL LIFE PHOTOGRAPHY – ABSTRACT IMAGERY

15+ yrs £18

Sunday 23 February 11am – 3pm

Summerlee Photomedia Studio

Create abstract imagery using the textures, patterns and colour found in objects around Summerlee Museum. Use our professional Photographic Studio to make stunning images suitable for your portfolio or for some wall art at home. Taken by Duncan Chisholm, a local school Principal Art Teacher.

AFTER HOURS AT THE MUSEUM

15+ yrs £10/£9 concession

Thursday 26 March 5.45pm -7.45pm

Summerlee Museum

Enjoy an after-hours evening in Summerlee Museum to explore the creative lighting opportunities at this time of the day. Led by one of Culture NL's photography tutors you can explore the character of the museum and its objects, learn how to use natural evening light creatively and introduce balanced portable flash or constant source lights for added effects.

PHOTO FIELD TRIP – GORGEOUS GLASGOW!

14+ yrs £10

Tuesday 30 June 10.30am – 3.30pm

Summerlee Photomedia Studio

Accompanied by one of Culture NL's photography tutors, get some expert tuition photographing the wonderful urban landscapes of Glasgow and its surroundings....always a favourite destination, as the city forms such a rich architectural and cultural backdrop to any photoshoot.

Advance booking and payment is essential for workshops and events as places are limited. Please call 01236 632828

HOLIDAY ACTIVITIES FOR YOUNG PEOPLE AND FAMILIES

ANIMATION MULTIVERSE – BASED ON LEGO

8-13 yrs £10

Wednesday 8, Thursday 9 or Friday 10 April 11am – 3pm
Summerlee Photomedia Studio

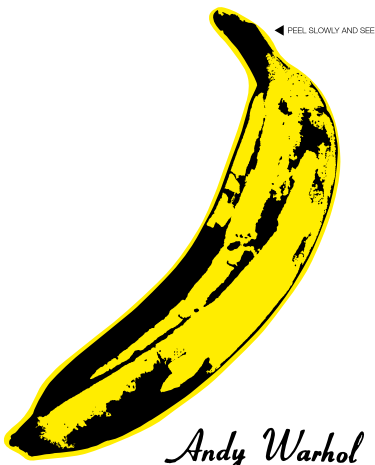
A one day workshop led by an animation artist where you will help create 'Culture NL's animation multiverse'. During the day you can create your own backdrops and sets, add characters then bring your story to life through the animation process including sound and music. Your finished work will be posted on VIMEO for you to view and download at home.

LIMITED EDITION! MONO PRINTING

8+ yrs £7 (includes all materials and equipment)

Thursday 9 April 10am – 12pm
Conference Room, North Lanarkshire Heritage Centre

Taking inspiration from the many iconic LP's from the 1960's–1990's, design and create your very own record sleeve, with a focus on line, motif and colour. Mono printing is a fast and energetic way of making a unique design using acrylic plastic sheets and coloured ink. Make a statement for the 21st Century with wow factor results!



Andy Warhol

**Advance booking and payment is
essential as places are limited.**
Please call 01236 632828

EASTER PHOTO MOMENTOS

All ages £2 per badge

Sunday 12 April 11am - 4pm

Summerlee Photomedia Studio

Try on an Easter bonnet or a prop from our 'wacky' range, have your photo taken and put on a badge, key ring or fridge magnet of yourself or with your family or friends.

Drop-in activity, no booking necessary

PHOTO ID KIT PERIOD PORTRAITS

All ages FREE with an optional £1 print

Tuesday 14 April 12pm – 4pm Summerlee Photomedia Studio

Use 'police style' Mac software to create your own unique characters and people. Great fun for all ages!

Drop-in activity, no booking necessary



PERFORMING ARTS

Culture NL performing arts is made up of drama, dance and music. Our programme of weekly classes runs throughout North Lanarkshire. Our aim is to give everyone the chance to access high quality affordable performing arts opportunities delivered by professionally trained artists.

We also design and deliver bespoke projects for a variety of client groups and can tailor these to suit your needs and budget.

We have previously developed projects for nursery, school, community, health and social care groups as well as working in partnership with national organisations such as Scottish Opera, National Theatre of Scotland, Indepen-dance, and YDance.

Why not get in touch?

Dance and Drama: Laura McIver,
Performing Arts Officer, mciverla@culturenl.co.uk

Music and Drama: Deborah McArthur,
Performing Arts Officer, mcarthurd@culturenl.co.uk



DANCE

STRICTLY BALLET

50+ yrs £4

The weekly 45 minute sessions exercise the mind and body and build strength, technique and a creative movement style. These classes are aimed at those who love to dance and learn, and enjoy working as a group. No experience of ballet required, just a love of music and movement!

Please wear comfortable clothing, soft shoes and bring a bottle of water.

Wednesdays	9.30am – 10.15am	Airdrie Town Hall
Thursdays	9.30am – 10.15am	Charlotte Toal Community Centre
Fridays	9.30am – 10.15am	Chryston Community Centre

STRICTLY STRETCH

50+ yrs £4.50

Weekly sessions to improve general fitness and the chance to learn anything from Abba to Salsa! Come along and have great fun! Meet new friends! Get your feet and heart rate going! Please wear comfortable clothing, soft shoes and bring a bottle of water.

Attend both classes for £7.50.

Tuesdays (new)	1pm - 2pm	Pather Community Centre
Wednesdays	10.30am – 11.30am	Airdrie Town Hall
Thursdays	10.30am – 11.30am	Charlotte Toal Community Centre
Fridays	10.30am – 11.30am	Chryston Community Centre



ADULT ALL ABILITY MOVEMENT CLASS

16+ yrs £5 (carers go free)

Come and join our creative movement class for adults with additional support needs. Classes are delivered by specialist tutors in a safe and relaxing environment. All sessions can be adapted to suit the needs of the participant. Carers are most welcome to join in the fun!

Tuesdays	11am – 12pm	Charlotte Toal Community Centre
Thursdays (new)	1pm - 2pm	Pather Community Centre

LITTLE GROOVERS

0-5yrs £4.50 per child (parent/carer goes free)

Come along and have an hour of carefree fun with your little one in a safe and colourful environment! Our specialist tutors use a variety of props, music and interactive storytelling that will have little imaginations' running wild! There is also soft play available for little ones to explore - it's sure to be a groovy time!

29th Jan / 19th Feb / 18th March / 22nd April / 20th May / 24th June

Wednesdays	12.30pm - 1.30pm	Airdrie Town Hall (Lesser Hall)
------------	------------------	---------------------------------

16th Jan / 6th Feb / 5th March / 2nd April / 7th May / 11th June

Thursdays	10am - 11am	Airdrie Town Hall (Lesser Hall)
-----------	-------------	---------------------------------

We also offer bespoke Little Groovers Sessions to nurseries, primaries and SEN schools. **Please contact Laura McIver for more information.**





MARY POPPINS WORKSHOP

Motherwell Concert Hall

Tuesday 7th April

10am - 4.30pm (Performance at 4pm)

8-12 years

£20

An exciting one day workshop rehearsing songs and routines from the classic Mary Poppins. Devise your own scenes from the film and create a performance to share with family and friends at the end of the day! Come along and try! Have fun! No experience required! Just a love of all things Mary Poppins!

TO BOOK YOUR PLACE,

CALL 01698 403120

OR VISIT CULTURENL.CO.UK



EXPLORE

Join In. Have Fun. Be Creative.

Motherwell Concert Hall

Saturday 6th June - 10.30am - 4pm

Sunday 7th June - 12pm - 6pm (Performance at 5pm)

9 years+

£40 (£20 Culture NL class participants paid as part of term 2 payment)

Join the Culture NL Performing Arts Team for an exciting exploration of all things theatre. We will take over Motherwell Concert Hall for a weekend of workshops, master-classes and experiences culminating in a performance on the Sunday evening. Explore is for young people who are interested in all things theatrical on and off the stage. A jam packed weekend of activity that is sure to have something for all budding stars of the future!



TO BOOK YOUR PLACE, CALL 01236 632828

DRAMA

Participants have the opportunity to take part in weekly drama workshops developing creativity, imagination, self-expression and confidence. Perform in our annual production at Motherwell Concert Hall and enjoy the creative process of devising an original script. Come along and learn new skills, make new friends and most importantly have fun!



FOR CHILDREN

JUNIORS 5-8yrs

Mondays	4pm - 5pm	Airdrie Town Hall
Wednesdays	4pm - 5pm	Motherwell Theatre

FOR YOUNG PEOPLE

INTERMEDIATE 5-12yrs

Tuesdays	4.30pm - 5.30pm	Bellshill Community Centre
----------	-----------------	----------------------------

SENIORS 9-12yrs

Mondays	5.15pm - 6.15pm	Airdrie Town Hall
Wednesdays	5.15pm - 6.15pm	Motherwell Theatre

Term 1: w/c 13 Jan – w/c 30 March, 11 weeks, £55

Term 2: w/c 20 April – w/c 1 June, 7 weeks, £55

**Please note classes follow NLC academic calendar so if the schools are off so are our classes. Payment is adjusted accordingly.*

** Term 2 fee includes Explore weekend at Motherwell Concert Hall*

Payment can be made by calling 01236 632828 between 9am and 4pm Monday to Friday. You can pay with most credit or debit cards.

YOUTH THEATRE

13-18 yrs

Culture NL youth theatres provide exciting opportunities for young people to develop skills in performing arts. Weekly workshops, masterclasses and performance projects enable participants to develop creative skills in a safe, inclusive and fun environment, whilst building confidence and making new friends.

Mondays	6.30pm - 8.30pm	Airdrie Town Hall
Wednesdays	6.30pm - 8.30pm	Meeting Room, Motherwell Theatre

Youth Theatre classes are payable in advance. Term dates and costs are;

Term 1: w/c 13 Jan – w/c 30 March, 11 weeks, £71.50

Term 2: w/c 20 April – w/c 1 June, 7 weeks, £65.50

**Please note classes follow NLC academic calendar so if the schools are off so are our classes. Payment is adjusted accordingly.*

** Term 2 fee includes Explore weekend at Motherwell Concert Hall*

Payment can be made by calling 01236 632828 between 9am and 4pm Monday to Friday. You can pay with most credit or debit cards.



DRAMA FOR ADULTS

CultureNL run two established drama classes for adults with mixed abilities. Learn new skills, meet new friends and experience the excitement of working towards a performance in a safe and relaxed environment.

NL2

16+ yrs £6.50 (carers free)

Thursdays	2pm - 4pm	Muirfield Community Centre
-----------	-----------	----------------------------

NL STUDIO

16+yrs £6.50 (carers free)

Thursdays	6pm - 8pm	Bellshill Community Centre
-----------	-----------	----------------------------



NL COLLECTIVE

18+ yrs

NL Collective is a project based community drama group for adults wishing to develop their performance and theatre making skills and push their skillset a little further. Working with Theatre Maker Pete Lannon the group will explore a variety of techniques, themes and issues and will create and perform their own work with likeminded people.

Thursdays 7pm - 9pm Airdrie Town Hall

NL Collective is payable in advance.

Term dates and costs are;

Term 1: w/c 13 Jan – w/c 30 March
11 weeks, £80.00

*Class fee includes production week at
Motherwell Theatre

**Payment can be made by calling 01236 632828
between 9am and 4pm Monday to Friday. You
can pay with most credit or debit cards.**

CultureNL and NL Collective presents...

Before a Storm

Created and performed by NL Collective and including a live community choir, *Before a Storm* is a performance about how we cope with change - whether we can see it on the horizon or not.

27 and 28 March 7.30pm

Motherwell Theatre

Tickets: £10, Concessions £8

**To book your tickets phone 01698 403120
or visit culturenl.co.uk**

supported by



CultureNL is a trading name of Culture and Leisure NL Ltd.

Culture and Leisure NL Ltd is a registered Scottish Charity, number SC043891. Company number SC435540.

sheepie is having
a massive party and
you are invited!

Mon 10th Feb, Motherwell Concert Hall

£10, 10am - 11.30am

Age 4 - 8

Come along and have a great time playing games and having lots of fun with Sheepie!

sheepie's panto
development
workshop/performance

Tue 11th Feb, Motherwell Concert Hall

£16.50, 9.30am - 12.30pm

Age 9 - 15

Come along and work with Sheepie for this 3 hour intensive masterclass, where you will get the chance to explore character development, content and devise a piece of drama that we will perform to friends and family at the end of the session.

To book phone **01698 403 120**
or visit **www.culturenl.co.uk**

Sheepie ☺



MUSIC

Our weekly music classes have the perfect mix of 1-2-1 tuition and group work, allowing participants to develop their own musical skills while learning to play as part of an ensemble.

GUITAR CLASSES

Children 8-16yrs £5.50

Tuesdays	5pm - 6pm	Airdrie Town Hall
Tuesdays	6pm - 7pm	Airdrie Town Hall

GUITAR AND UKULELE CLASSES

Children 8-16 yrs £5.50

Mondays	4pm - 5pm	Old Monkland Community Centre
Mondays	5pm - 6pm	Old Monkland Community Centre
Mondays	6pm - 7pm	Old Monkland Community Centre
Wednesdays	4.30pm - 5.30pm	John McCormack Centre
Wednesdays	5.30pm - 6.30pm	John McCormack Centre
Wednesdays	6.30pm - 7.30pm	John McCormack Centre
Thursdays	5pm - 6pm	Muirfield Community Centre
Thursdays	6pm - 7pm	Muirfield Community Centre
Thursdays	4.15pm - 5.15pm	Wishaw Musicworks

Adults 16+ yrs £6/£5.50 concession

Mondays	2.30pm - 3.30pm	Wishaw Musicworks
Mondays	7pm - 8pm	Old Monkland Community Centre
Tuesdays	7pm - 8pm	Airdrie Town Hall
Thursdays	7pm - 8pm	Muirfield Community Centre

KEYBOARD CLASSES

Children 8-16 yrs £5.50

Tuesdays	5pm - 6pm	Muirfield Community Centre
Tuesdays	6pm - 7pm	Muirfield Community Centre
Tuesdays	4pm - 5pm	Wishaw Musicworks
Tuesdays	5pm - 6pm	Wishaw Musicworks

Adults 16+ yrs £6/£5.50 concession per class

Tuesdays	1pm - 2pm	Wishaw Musicworks
----------	-----------	-------------------



DRUM CLASSES

Children 8-16 yrs £5.50

Thursdays	5.30pm - 6.30pm	Wishaw Musicworks
Fridays	3.30pm - 4.30pm	Wishaw Musicworks

Adults 16+ yrs £7

Fridays	1pm - 3pm	Wishaw Musicworks
---------	-----------	-------------------

SINGING

16+ yrs £5

Do you like to sing in the bath? Hum along to the radio in the car? Our singing groups are perfect for honing your skills in a fun friendly environment, not to mention the health benefits derived from singing in a group. Our weekly workshops enable participants to develop their vocal ability, learn new techniques while meeting likeminded people.

Tuesdays	7.30pm - 9pm	Muirfield Community Centre
Thursdays	6.15pm - 7.45pm	Reigart Room, Summerlee Museum

ADULT ALL ABILITY MUSIC

16+ yrs £4.50

These weekly workshops combine drumming and percussion to your all-time favourite songs. Come along and join the jamboree!

Tuesdays	11.30am - 12.30pm	Wishaw Musicworks
Tuesdays	11.30am - 12.30pm	Cumbernauld New Town Hall
Wednesdays	10.30am - 11.30am	Wishaw Musicworks
Wednesdays	11.30am - 12.30pm	Wishaw Musicworks
Wednesdays	1pm - 2pm	Wishaw Musicworks



MIND MUSIC SOUL

£4.50

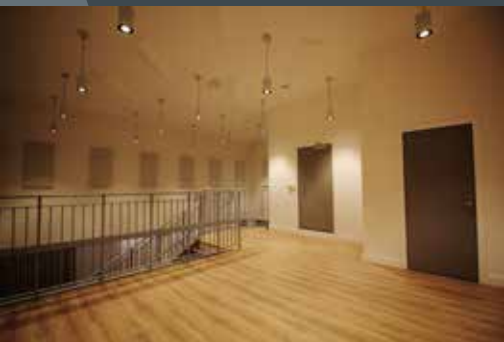
Mind Music Soul is a weekly inclusive social group which supports people living with Dementia as well as those who feel isolated within their community. The 90 minute sessions enable participants to sing together, listen to music, play along to songs with percussion instruments and most importantly, meet new people, engage in good conversation in a fun and supportive environment.

Tuesdays	2pm - 3.30pm	Airdrie Town Hall
Thursdays	2pm - 3.30pm	Wishaw Musicworks
Fridays	12.30pm - 2pm	Cumbernauld New Town Hall



BEETROOT RECORDING STUDIO

Airdrie



Beetroot Studios has been extended with a magnificent new live room measuring 175 square metres over two levels, plus a vocal booth and two isolation booths. In addition to the existing pine-clad live room, this award-winning facility now features an exceptionally large and beautiful-sounding recording area.

With its extensive collection of premier outboard equipment and impressive microphone list, along with its renowned track record of delivering recordings of the highest standard, Beetroot is now one of the premier studio facilities in the UK.

Situated directly between Glasgow and Edinburgh, Beetroot is extremely easy to reach from the M8 and M74, with easy rail links nearby.

For further information email
stuartmac148@gmail.com

culturenl.co.uk/beetroot-recording-studio

EXHIBITIONS

All our exhibitions are free of charge to visit.



Airdrie Community Health Centre

January 27 – March 16

Moira Anderson Foundation

This exhibition gives an insight into the work of the Moira Anderson Foundation. The charity supports adults and children affected by childhood sexual abuse. They support people through trauma and help them live their lives to the full by offering a range of services including counselling, group work and complimentary therapies.

March 30 – June 1

HOPE for Autism

HOPE for Autism is a registered charity that has been offering pre and post-diagnostic support to families of autistic children and young people since 2002. Families can access emotional and practical support and advice at any point during their parenting journey as well as access a range of autism-related training and information sessions, parent support groups and support from staff at important decision-making meetings. They use a whole family support approach which helps them to reach siblings and other important family members such as grandparents who are also encouraged to attend training sessions.

The art work on display gives a fascinating insight into the work of the charity and how families are affected by autism.

June 15 – September 7

COPD Exhibition

This exhibition explores the work of the Airdrie Local Area Partnership teams in investigating the prevalence of COPD (chronic obstructive pulmonary disease). COPD is an umbrella term for a number of conditions which cause long-term damage to the lungs. Their work involves early prevention and intervention to ensure people get the right support and help slow down the effects of COPD to keep people living with the condition healthier for longer.

Bellshill Cultural Centre

January 22 – April 22

Bellshill Photographers

A display of photographic work by class members from Culture NL's Bellshill photography class. Class member David Anderson says, "We're amateur photographers who like the challenge of taking an image and using the available software to enhance or modify the image in some way to create a pleasing picture. It also gets us out and about at all times in the year, meeting people and seeing different parts of the country".

Each member of the group will submit a selection of chosen work resulting in an eclectic mix of approaches and aesthetic and formal decision making.

May 6 – June 17

Polly Pentreath

A graduate from the Glasgow School of Art 2019, Painting and Printmaking Department, Polly's practice is centred on a meeting between the real and the imaginary through dream narratives and cinematic aesthetics. She collects imagery from books, film and mythology, among other sources, to suggest ambiguous narratives reminiscent of film stills. Much of this is concerned with the transience of postmodern architecture: the offices and hotel chains that are as anonymous as they are universally familiar. Surrealist film and literature informs much of Polly's practice. Through painting she aims to expand space(s) into dreamscapes and show a reality warped by the imaginary.

June 24 – August 12

Pather Artworks Ceramics

An exciting array of new work by members who attend ceramic classes at Pather Artworks in Wishaw. Displayed work will be presented in the form of clay panel reliefs and photographic documentation.

Motherwell Concert Hall and Theatre

January 20 – April 20

Charlie Yates

A recent graduate of Glasgow School of Art, Charlie is now based in Glasgow and Edinburgh. His work is made up of observations and partially recalled places, objects and memories in the form of sketches, photographs and verbal recordings. He attempts to re-contextualize these experiences, the fragmented nature of memory is suggested within his paintings.

Through recent research, he discovered Lambay a private island off the East coast of Dublin. On a trip to the island he came across an abandoned 'Real' tennis court and the desolate nature of this space heightened his own sense of isolation. A burgeoning interest in this unusual place stimulated an extended body of work, some of which we are fortunate to have on display in North Lanarkshire.

May 11 – July 27

Culture NL Photography Class Work

We are pleased to host a new photographic display produced by members who attend Culture NL photography classes. The work showcases a broad range of subjects from portrait photography, reportage, still life, landscape and more. Not to be missed, this exhibition showcases a wealth of talent from North Lanarkshire.

Schools Outreach Programme for Exhibitions

Selected exhibitions offer student groups inspiration together with hands on workshops provided by a professional artist. These kinds of sessions can offer the student a great insight into the artist's work and a range of activities that stimulate and inspire. If you are interested in taking part in workshops related to the forthcoming exhibition programme

please call 01236 632828.

GENERAL INFORMATION

Tickets and Booking

For advance bookings and payment for selected classes and workshops call 01236 632828. For advance bookings for performances call 01698 403120 or visit culturenl.co.uk

Concession

We offer a concession price for selected, stated elements of our programme. To be eligible for a concessionary price the following proof must be shown:

- Students (with valid student ID)
- Young Scot (Card Holders)
- Senior citizens (60 years and over)
- Unwaged (relevant document required)
- Disabled (relevant document required)

Refunds

Tickets and advance payments for performances, classes and workshops are non-refundable, however in the unlikely event of CultureNL cancelling a workshop or class, patrons will be offered a refund.

Class Attendance

Classes that are operating with low attendance numbers after the initial three week period will be terminated. Alternative options will be offered where possible, but this cannot be guaranteed.

Please note that the Community Arts Team cannot be held responsible for changes of venue. Should a change of venue occur we will endeavour to inform all participants in advance.

How Are We Performing?

Community Arts section are required to collate statistical information on a quarterly basis. Here is a selection of our statistics relating to our arts activity:

- 35,439 people attended Community Arts activities in 2018/19
- In 2018/19 we received 13 compliments and 1 complaint which was upheld

VENUE DIRECTORY

Airdrie Community Health Centre

88 Graham St, Airdrie ML6 6DB
Tel 01236 772200

Airdrie Library

Wellwynd, Airdrie ML6 0AG
Tel 01236 758070

Airdrie Town Hall

Stirling Street, Airdrie ML6 0AS
Tel 01236 638978

Beetroot Studios

Varnsdorf Way Petersburn
Airdrie, ML6 8EQ

Bellshill Cultural Centre

John St, Bellshill ML4 1RJ
Tel 01698 346770

Chryston Cultural Centre

Lindsaybeg Road, Chryston G69 9DL
Tel 01236 856277

Charlotte Toal Centre

Dundyvan Road, Coatbridge ML5 4AG
Tel 01236 710284

Cumbernauld New Town Hall

Bron Way, Cumbernauld G67 1DZ
Tel 01236 455500

Gartcosh Community Centre

Lochend Road, Gartcosh G69 2AB
Tel 01236 874861

John McCormack Centre

Motherwell Road, Carfin ML1 4EB
Tel 01698 230419

Link Community Centre

Bron Way, Cumbernauld G67 1EW
Tel 01236 728200

Motherwell Theatre Meeting Room
Motherwell Concert Hall and Theatre

Windmillhill Street, Motherwell ML1 1AB
Tel 01698 274545

Muirfield Community Centre

1a South Muirhead Road, Cumbernauld G67 1AX
Tel 01236 632736

Musicworks

within Houldsworth Centre

Kenilworth Avenue, Wishaw ML2 7LP
Tel 01236 632828

North Lanarkshire Heritage Centre

High Road, Motherwell ML1 3HU
Tel 01698 27588

Old Monkland Community Centre

23 Lismore Drive ML5 5PG
Tel 01236 428047

Pather Artworks

Caledonian Road, Wishaw ML2 0HZ
Tel 01698 351559

Photomedia Studio

Summerlee Museum of Scottish Industrial Life, Heritage Way,
Coatbridge ML5 1QD
01236 638460

Stepps Cultural Centre

10 Blenheim Avenue, Stepps G33 6FH
Tel 01236 638555



ARTS BY AREA

Area	Venue	Day/Date/Term	Time
Airdrie	Airdrie Community Health Centre	27 Jan - 16 Mar	9am - 5pm
Airdrie	Airdrie Community Health Centre	30 Mar - 1 Jun	9am - 5pm
Airdrie	Airdrie Community Health Centre	15 Jun - 7 Sep	9am - 5pm
Airdrie	Airdrie Library	Thursdays	5:15pm - 6:45pm
Airdrie	Airdrie Town Hall	Wednesdays	9:30am - 10:15am
Airdrie	Airdrie Town Hall	Wednesdays	10:30am - 11:30am
Airdrie	Airdrie Town Hall	Wednesdays (Monthly)	12:30pm - 1:30pm
Airdrie	Airdrie Town Hall	Thursdays (Monthly)	10am - 11am
Airdrie	Airdrie Town Hall	Mondays Term 1: 13 Jan - 30 Mar Term 2: 20 Apr - 1 Jun	4pm - 5pm
Airdrie	Airdrie Town Hall	Mondays Term 1: 13 Jan - 30 Mar Term 2: 20 Apr - 1 Jun	5:15pm - 6:15pm
Airdrie	Airdrie Town Hall	Mondays Term 1: 13 Jan - 30 Mar Term 2: 20 Apr - 1 Jun	6:30pm - 8:30pm
Airdrie	Airdrie Town Hall	Tuesdays	5pm - 6pm
Airdrie	Airdrie Town Hall	Tuesdays	6pm - 7pm
Airdrie	Airdrie Town Hall	Tuesdays	2pm - 3:30pm
Airdrie	Airdrie Town Hall	Thursdays	1:30pm - 3:30pm
Airdrie	Airdrie Town Hall	Thursdays	6pm - 7:30pm
Airdrie	Airdrie Town Hall	Tuesdays	7pm - 8pm
Airdrie	Airdrie Town Hall	Thursdays Term 1: 13 Jan - 30 Mar	7pm - 9pm
Bellshill	Bellshill Cultural Centre	Mondays	1:30pm - 3:30pm
Bellshill	Bellshill Cultural Centre	Wednesdays	1pm - 3pm
Bellshill	Bellshill Cultural Centre	Thursdays	5pm - 6:30pm
Bellshill	Bellshill Cultural Centre	Thursdays	6pm - 8pm
Bellshill	Bellshill Cultural Centre	Tuesdays Term 1: 13 Jan - 30 Mar Term 2: 20 Apr - 1 Jun	4:30pm - 5:30pm
Bellshill	Bellshill Cultural Centre	22 Jan - 22 Apr	9am - 5pm
Bellshill	Bellshill Cultural Centre	6 May - 17 Jun	9am - 5pm
Bellshill	Bellshill Cultural Centre	24 Jun - 12 Aug	9am - 5pm
Chryston	Chryston Community Centre	Fridays	9:30am - 10:15am

Class Type	Discipline	Price
Moirra Anderson Foundation	Exhibition	Free
Hope for Autism	Exhibition	Free
COPD Exhibition	Exhibition	Free
Creative Writing 16+yrs	Writing	£5.50/£5 Concession
Strictly Ballet 50+yrs	Dance	£4.00
Strictly Stretch 50+yrs	Dance	£4.50
Little Groovers 0-5yrs	Drama	£4.50 per child (parents/carers go free)
Little Groovers 0-5yrs	Drama	£4.50 per child (parents/carers go free)
Theatre for Young People - Juniors 5-8yrs	Drama	Term 1: £55 Term 2: £55
Theatre for Young People - Seniors 9-12yrs	Drama	Term 1: £55 Term 2: £55
Youth Theatre 13+yrs	Drama	Term 1: £71.50 Term 2: £65.50
Guitar Classes 8-16yrs	Music	£5.50
Guitar Classes 8-16yrs	Music	£5.50
Mind Music Soul	Music	£4.50
Adult Drawing and Painting Classes 16+yrs	Visual Art and Crafts	£7/£6 Concession
Kids Visual Art and Crafts Classes 7+yrs	Visual Art and Crafts	£6
Adult Guitar Classes 16yrs+	Music	£6/£5.50 Concession
NL Collective 18+yrs	Drama	Term 1: £80
Adult Drawing and Painting Classes 16+yrs	Visual Art and Crafts	£7/£6 Concession
Creative Writing 16+yrs	Writing	£5.50/£5 Concession
Kids Visual Art and Crafts Classes 7+yrs	Visual Art and Crafts	£6
NLStudio All Ability Adult Drama 16+yrs	Drama	£6.50 (carers free)
Theatre for Young People - Intermediate 5-12yrs	Drama	Term 1: £55 Term 2: £55
Bellshill Photographers	Exhibition	Free
Polly Pentreath	Exhibition	Free
Pather Artworks Ceramics	Exhibition	Free
Strictly Ballet 50+yrs	Dance	£4.00

Area	Venue	Day/Date/Term	Time
Chryston	Chryston Community Centre	Fridays	10:30am - 11:30am
Coatbridge	Charlotte Toal Centre	Tuesdays	11am - 12pm
Coatbridge	Charlotte Toal Centre	Thursdays	9:30am - 10:15am
Coatbridge	Charlotte Toal Centre	Thursdays	10:30am - 11:30am
Coatbridge	Charlotte Toal Centre	Monday	7pm - 9pm
Coatbridge	Charlotte Toal Centre	Tuesdays	10am - 12pm
Coatbridge	Charlotte Toal Centre	Tuesdays	7pm - 9pm
Coatbridge	Charlotte Toal Centre	Tuesdays	4pm - 5:30pm
Coatbridge	Old Monkland Community Centre	Monday	7pm - 8pm
Coatbridge	Old Monkland Community Centre	Monday	4pm - 5pm
Coatbridge	Old Monkland Community Centre	Monday	5pm - 6pm
Coatbridge	Old Monkland Community Centre	Monday	6pm - 7pm
Coatbridge	Summerlee Museum (Reigart Room)	Thursdays	6:15pm - 7:45pm
Coatbridge	Summerlee Museum (Reigart Room)	Saturday 1 Feb	10am - 4pm
Coatbridge	Summerlee Museum (Reigart Room)	Saturday 14 Mar	10am - 4pm
Coatbridge	Summerlee Museum (Reigart Suite)	Saturday 16 May	10am - 4pm
Coatbridge	Summerlee Museum (Reigart Suite)	Saturday 6 Jun	10am - 4pm
Coatbridge	Summerlee Photomedia Studio	Saturday 23 Feb	11am - 3pm
Coatbridge	Summerlee Photomedia Studio	Thursday 26 Mar	5:45pm - 7:45pm
Coatbridge	Summerlee Photomedia Studio	Wed 8, Thurs 9 or Fri 10 April	11am - 3pm
Coatbridge	Summerlee Photomedia Studio	Tuesday 30 Jun	10:30am - 3:30pm
Cumbernauld	Cumbernauld New Town Hall	Tuesdays	11:30am - 12:30pm
Cumbernauld	Cumbernauld New Town Hall	Fridays	12:30pm - 2pm
Cumbernauld	Muirfield Community Centre	Thursdays	2pm - 4pm
Cumbernauld	Muirfield Community Centre	Tuesdays	5pm - 6pm
Cumbernauld	Muirfield Community Centre	Tuesdays	6pm - 7pm
Cumbernauld	Muirfield Community Centre	Thursdays	7pm - 8pm
Cumbernauld	Muirfield Community Centre	Thursdays	5pm - 6pm
Cumbernauld	Muirfield Community Centre	Thursdays	6pm - 7pm
Cumbernauld	Muirfield Community Centre	Tuesdays	7:30pm - 9pm
Cumbernauld	The Link	Tuesdays	10am - 12pm
Cumbernauld	The Link	Wednesdays	4pm - 5:30pm
Gartcosh	Gartcosh Community Centre	Wednesdays	6:45pm - 8pm
Motherwell	John McCormack Centre	Wednesdays	4:30pm - 5:30pm

Class Type	Discipline	Price
Strictly Stretch 50+yrs	Dance	£4.50
Adult All Ability Dance and Movement Class 16+yrs	Dance	£5 (carers go free)
Strictly Ballet 50+yrs	Dance	£4.00
Strictly Stretch 50+yrs	Dance	£4.50
Adult Drawing and Painting Classes 16+yrs	Visual Art and Crafts	£7/£6 Concession
Adult Drawing and Painting Classes 16+yrs	Visual Art and Crafts	£7/£6 Concession
Adult Drawing and Painting Classes 16+yrs	Visual Art and Crafts	£7/£6 Concession
Kids Visual Art and Crafts Classes 7+yrs	Visual Art and Crafts	£6
Adult Guitar and Ukulele Classes 16yrs+	Music	£6/£5.50 Concession
Guitar and Ukulele Classes 8-16yrs	Music	£5.50
Guitar and Ukulele Classes 8-16yrs	Music	£5.50
Guitar and Ukulele Classes 8-16yrs	Music	£5.50
Singing 16+yrs	Music	£5
Drawing with Perspective 16+yrs	Visual Art and Crafts	£35/£32 Concession
Dry-point & Copper Etching 16+yrs	Visual Art and Crafts	£35/£32 Concession
Architecture & Atmosphere in Painting 16+yrs	Visual Art and Crafts	£35/£32 Concession
Landscapes and Water 16+yrs	Visual Art and Crafts	£35/£32 Concession
Studio Still Life Photography - Abstract Imagery 15+yrs	Visual Art and Crafts	£18
After hours at the Museum 15+yrs	Visual Art and Crafts	£10/£9 concession
Easter Animation Multiverse Workshop	Visual Art and Crafts	£10
Photo Field Trip - Gorgeous Glasgow! 14+yrs	Visual Art and Crafts	£10
Adult All Ability Music Workshops 16+yrs	Music	£4.50
Mind Music Soul	Music	£4.50
NL2 All Ability Adult Drama 16+yrs	Drama	£6.50 (carers free)
Children's Keyboard Classes 8+yrs	Music	£5.50
Children's Keyboard Classes 8+yrs	Music	£5.50
Adult Guitar and Ukulele Classes 16yrs+	Music	£6/£5.50 Concession
Guitar and Ukulele Classes 8-16yrs	Music	£5.50
Guitar and Ukulele Classes 8-16yrs	Music	£5.50
Singing 16+yrs	Music	£5
Adult Drawing and Painting Classes 16+yrs	Visual Art and Crafts	£7/£6 Concession
Kids Visual Art and Crafts Classes 7+yrs	Visual Art and Crafts	£6
Kids Visual Art and Crafts Classes 7+yrs	Visual Art and Crafts	£6
Guitar and Ukulele Classes 8-16yrs	Music	£5.50

Area	Venue	Day/Date/Term	Time
Motherwell	John McCormack Centre	Wednesdays	5:30pm - 6:30pm
Motherwell	John McCormack Centre	Wednesdays	6:30pm - 7:30pm
Motherwell	Motherwell Concert Hall and Theatre	20 Jan - 20 Apr	9am - 5pm
Motherwell	Motherwell Concert Hall and Theatre	11 May - 27 Jul	9am - 5pm
Motherwell	Motherwell Theatre Meeting Room	Wednesdays Term 1: 13 Jan - 30 Mar Term 2: 20 Apr - 1 Jun	4pm - 5pm
Motherwell	Motherwell Theatre Meeting Room	Wednesdays Term 1: 13 Jan - 30 Mar Term 2: 20 Apr - 1 Jun	5:15pm - 6:15pm
Motherwell	Motherwell Theatre Meeting Room	Wednesdays Term 1: 13 Jan - 30 Mar Term 2: 20 Apr - 1 Jun	6:30pm - 8:30pm
Stepps	Stepps Cultural Centre	Fridays	10am - 12pm
Wishaw	Pather Artworks	Fridays	1:30pm - 3:30pm
Wishaw	Pather Artworks	Mondays	1:30pm - 3pm
Wishaw	Pather Artworks	Tuesdays	1:30pm - 3pm
Wishaw	Pather Artworks	Wednesdays	11am - 12:30pm
Wishaw	Pather Artworks	Wednesdays	1:30pm - 3pm
Wishaw	Pather Artworks	Thursdays	10am - 12pm
Wishaw	Pather Artworks	Tuesdays	6pm - 8pm
Wishaw	Pather Artworks	Thursdays	6pm - 8pm
Wishaw	Pather Artworks	Tuesdays	4pm - 5pm
Wishaw	Pather Community Centre	Thursday	1pm-2pm
Wishaw	Pather Community Centre	Tuesdays	1pm-2pm
Wishaw	Wishaw Musicworks	Tuesdays	11:30am - 12:30pm
Wishaw	Wishaw Musicworks	Wednesdays	10:30am - 11:30am
Wishaw	Wishaw Musicworks	Wednesdays	11:30am - 12:30pm
Wishaw	Wishaw Musicworks	Wednesdays	1pm - 2pm
Wishaw	Wishaw Musicworks	Mondays	2:30pm - 3:30pm
Wishaw	Wishaw Musicworks	Thursdays	4:15pm - 5:15pm
Wishaw	Wishaw Musicworks	Tuesdays	1pm - 2pm
Wishaw	Wishaw Musicworks	Tuesdays	4pm - 5pm
Wishaw	Wishaw Musicworks	Tuesdays	5pm - 6pm
Wishaw	Wishaw Musicworks	Fridays	1pm - 3pm
Wishaw	Wishaw Musicworks	Thursdays	5:30pm - 6:30pm
Wishaw	Wishaw Musicworks	Fridays	3:30pm - 4:30pm
Wishaw	Wishaw Musicworks	Thursdays	2pm - 3:30pm

Class Type	Discipline	Price
Guitar and Ukulele Classes 8-16yrs	Music	£5.50
Guitar and Ukulele Classes 8-16yrs	Music	£5.50
Charlie Yates	Exhibition	Free
Culture NL Photography Class Work	Exhibition	Free
Theatre for Young People - Juniors 5-8yrs	Drama	Term 1: £55 Term 2: £55
Theatre for Young People - Seniors 9-12yrs	Drama	Term 1: £55 Term 2: £55
Youth Theatre 13+yrs	Drama	Term 1: £71.50 Term 2: £65.50
Adult Drawing and Painting Classes 16+yrs	Visual Art and Crafts	£7/£6 Concession
Adult Drawing and Painting Classes 16+yrs	Visual Art and Crafts	£7/£6 Concession
Adult Ceramics Classes 16+yrs	Visual Art and Crafts	£7/£6 Concession
Adult Ceramics Classes 16+yrs	Visual Art and Crafts	£7/£6 Concession
Adult Ceramics Classes 16+yrs	Visual Art and Crafts	£7/£6 Concession
Adult Ceramics Classes 16+yrs	Visual Art and Crafts	£7/£6 Concession
Adult Studio Ceramics Classes 16+yrs	Visual Art and Crafts	£7.50/£6.50 Concession
Ceramics Evening Class for Adults 16+yrs	Visual Art and Crafts	£7.50/£6.50 Concession
Ceramics Evening Class for Adults 16+yrs	Visual Art and Crafts	£7.50/£6.50 Concession
Crafty Kids Ceramics Classes at Pather Artworks 8+yrs	Visual Art and Crafts	£5.50
Adult All Ability Dance and Movement Class 16+yrs	Dance	£5 (carers go free)
Stictly Stretch 50+yrs	Dance	£4.50
Adult All Ability Music Workshops 16+yrs	Music	£4.50
Adult All Ability Music Workshops 16+yrs	Music	£4.50
Adult All Ability Music Workshops 16+yrs	Music	£4.50
Adult All Ability Music Workshops 16+yrs	Music	£4.50
Adult Guitar and Ukulele Classes 16yrs+	Music	£6/£5.50 Concession
Guitar and Ukulele Classes 8-16yrs	Music	£5.50
Adult Keyboard Class 16+yrs	Music	£6/£5.50 Concession
Children's Keyboard Classes 8+yrs	Music	£5.50
Children's Keyboard Classes 8+yrs	Music	£5.50
Adult Drum Classes 16+yrs	Music	£7
Children's Drum Classes 8-16yrs	Music	£5.50
Children's Drum Classes 8-16yrs	Music	£5.50
Mind Music Soul	Music	£4.50

ARTS AND YOU

north lanarkshire's
community arts programme

JANUARY - JULY 2020



**DISCOVER
YOUR
TALENT**



supported by



[Culturenl.co.uk/arts](https://culturenl.co.uk/arts)



[CultureNLArts](https://www.facebook.com/CultureNLArts)



[Arts_NL](https://twitter.com/Arts_NL)



01236 632828